

# 10 期數的住宅物業的樓面平面圖 FLOOR PLANS OF RESIDENTIAL PROPERTIES IN THE PHASE

在本頁上之備註和圖例適用於全部的「期數的住宅物業的樓面平面圖」頁數。

The remarks and legends on this page apply to all pages of "Floor plans of residential properties in the Phase".

## 樓面平面圖中使用名詞及簡稱的圖例

### Legend of Terms and Abbreviations used on Floor Plans

ALUM. FEATURE = Aluminium Feature 鋁質飾面

A/C PLATFORM = Air-conditioner Platform 冷氣機平台

A/C = Air-conditioning Unit 冷氣機

A.F. = Architectural Feature 建築裝飾

BAL. = Balcony 露台

BATH = Bathroom 浴室

B.R. = Bedroom 睡房

DN = Down 落

E.D. = Electrical Duct 電線管道

E.A.D. = Exhaust Air Duct 排風管道

E.L.V. DUCT = Extra Low Voltage Duct 特低壓電線井

E.M.R. = Electric Meter Room 電錶房

F.H. = Fire Hydrant 消防栓

P.D. (F.S.) = Fire Services Pipe Duct 消防管道

H.R. = Hose Reel 消防喉轆

KIT. = Kitchen 廚房

LIV./DIN. = Living Room / Dining Room 客廳/飯廳

M.B.R. = Master Bedroom 主人睡房

OPEN KIT. = Open Kitchen 開放式廚房

POTABLE WATER PUMP RM. = Potable Water Pump Room 食水泵房

P.D. = Pipe Duct 管道

R.C. = Reinforced Concrete 鋼筋混凝土

R.S.M.R.R. = Refuse Storage and Material Recovery Room 垃圾及物料回收室

T.R.S. = Temporary Refuge Space 臨時庇護處

U.P. = Utility Platform 工作平台

W.M.C. = Water Meter Cabinet 水錶櫃

### 備註：

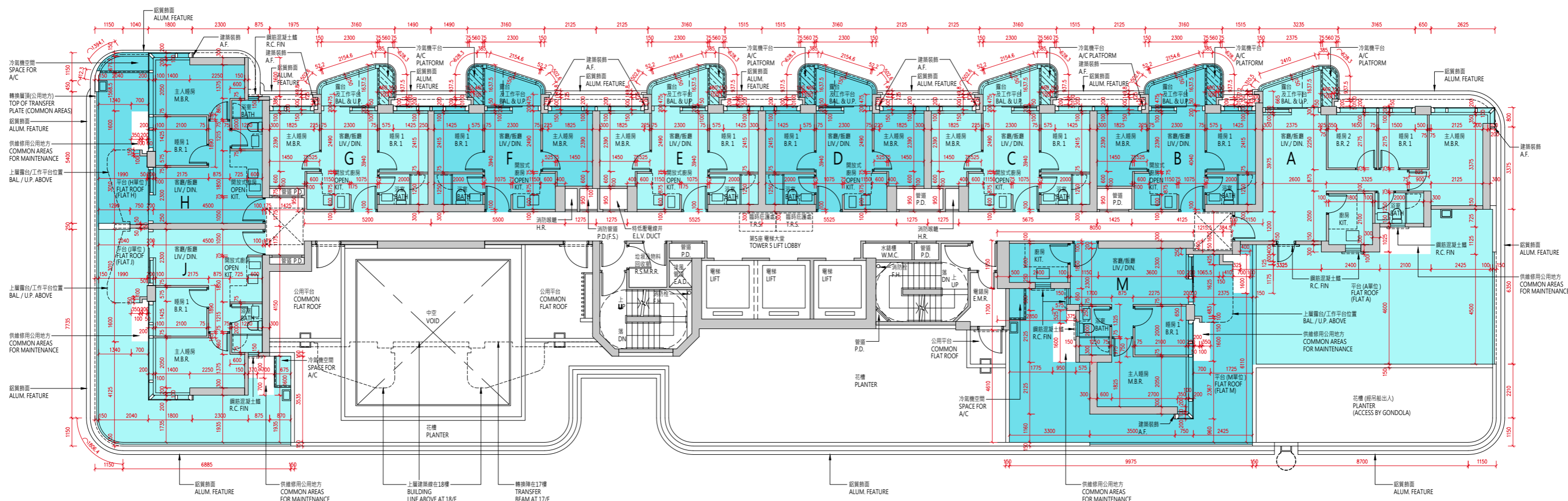
1. 部分住宅物業的露台、工作平台、平台、天台或外牆或設有外露之公用喉管，或裝飾板內藏之公用喉管。
2. 部分住宅物業內之部分天花或有跌級樓板，用以安裝上層之機電設備或配合上層之結構、建築及/或裝修設計上的需要。
3. 部分住宅物業內或設有天花假陣或假天花用以安裝冷氣喉管及/或其他機電設備。
4. 樓面平面圖所列之數字為以毫米標示之建築結構尺寸，並以四捨五入至整數。
5. 各住宅物業的樓面平面圖內所展示之裝置及設備的圖標如浴缸、洗手盆、座廁、淋浴間、洗滌盆、櫃(如有)等乃根據最新經核准的建築圖則擬備，其形狀、尺寸、比例或與實際提供的裝置及設備存在差異，僅供示意及參考之用。

### Remarks:

1. Common pipes exposed or enclosed in cladding may be located at the balcony, utility platform, flat roof, roof or external wall of some residential properties.
2. There may be sunken slabs at some parts of the ceiling inside some residential properties for the installation of mechanical and electrical services of the floor above or due to the structural, architectural and/or decoration design requirements of the floor above.
3. There may be ceiling bulkheads or false ceiling inside some residential properties for the installation of air-conditioning conduits and/or other mechanical and electrical services.
4. The dimensions of the floor plans are all structural dimensions in millimeter and rounded off to the nearest integer.
5. Those icons of fittings and fitments shown on the floor plans of residential properties like bathtubs, wash basins, water closets, shower cubicles, sink units, cabinets (if any) etc. are prepared in accordance with the latest approved building plans. Their shapes, dimensions, scales may be different from the fittings and fitments actually provided and they are for indication and reference only.

# 10 期數的住宅物業的樓面平面圖 FLOOR PLANS OF RESIDENTIAL PROPERTIES IN THE PHASE

3樓樓面平面圖  
3/F Floor Plan



備註：1. 樓面平面圖所列的數字為以毫米標示之建築結構尺寸，並以四捨五入至整數。  
2. 平台空白位置為供維修大廈設備使用的公用地方。

Notes: 1. The dimensions in floor plans are all structural dimensions in millimeter and rounded off to the nearest integer.  
2. Blank areas on the flat roof are common areas for building facility maintenance.

# 10 期數的住宅物業的樓面平面圖

## FLOOR PLANS OF RESIDENTIAL PROPERTIES IN THE PHASE

每個住宅物業 Each Residential Property	樓層 Floor	第 5 座 Tower 5									
		單位 Flat									
		A	B	C	D	E	F	G	H	J	M
層與層之間的高度 (毫米) Floor-to-Floor Height (mm)	3 樓 3/F	2950, 3250	2900, 3200, 3250	3200, 3250	2900, 3200, 3250	2900, 3200, 3250	2900, 3200, 3250	2900, 3200, 3250	2950, 3200, 3250	2900, 2950, 3200, 3250	3250
樓板 (不包括灰泥) 的厚度 (毫米) Thickness of Floor Slab (excluding plaster) (mm)		125, 150	125, 150	125, 150	125, 150	125, 150	125, 150	125, 150	125, 150	125, 150	150

因住宅物業的較高樓層的結構牆的厚度遞減，較高樓層的內部面積，一般比較低樓層的內部面積稍大。

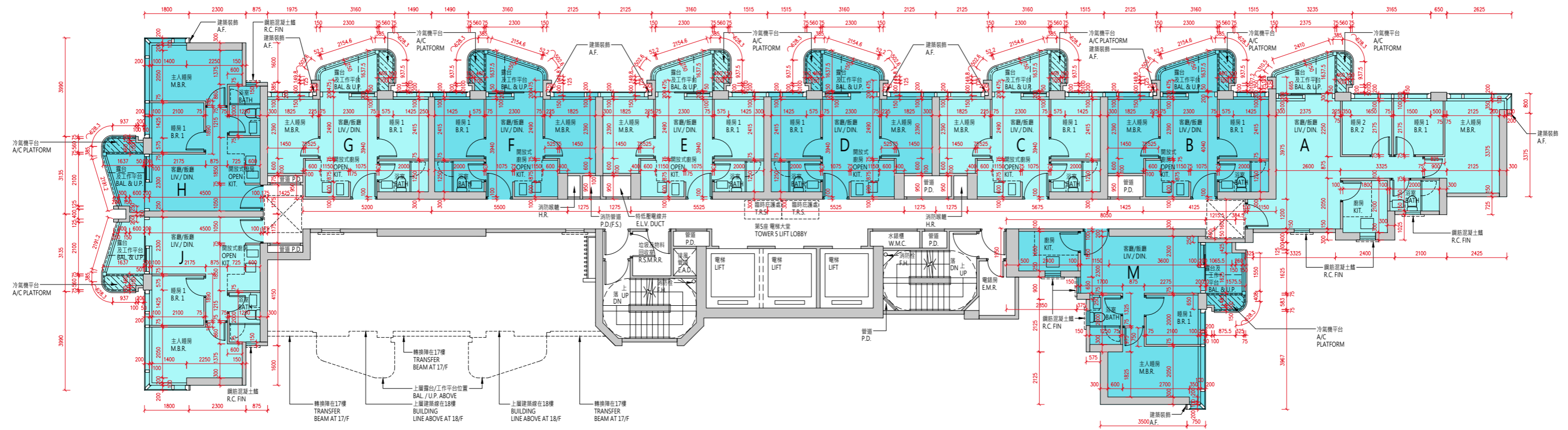
The internal areas of the residential properties on the upper floors will generally be slightly larger than those on the lower floors because of the reducing thickness of the structural walls on the upper floors.

請參閱本售樓說明書第25頁為住宅物業樓面平面圖而設之備註及名詞及簡稱的圖例。

Please refer to page 25 of this sales brochure for the remarks and legends of the terms and abbreviations for the floor plans of residential properties.

# 10 期數的住宅物業的樓面平面圖 FLOOR PLANS OF RESIDENTIAL PROPERTIES IN THE PHASE

5樓-12樓、15樓-17樓樓面平面圖  
5/F-12/F, 15/F-17/F Floor Plan



比例：0米/M 5米/M  
Scale: 5/M

備註：樓面平面圖所列的數字為以毫米標示之建築結構尺寸，並以四捨五入至整數。

Note: The dimensions in floor plans are all structural dimensions in millimeter and rounded off to the nearest integer.

# 10 期數的住宅物業的樓面平面圖

## FLOOR PLANS OF RESIDENTIAL PROPERTIES IN THE PHASE

每個住宅物業 Each Residential Property	樓層 Floor	第 5 座 Tower 5									
		單位 Flat									
		A	B	C	D	E	F	G	H	J	M
層與層之間的高度 (毫米) Floor-to-Floor Height (mm)	5 樓 -12 樓、 15 樓 -17 樓 5/F-12/F, 15/F-17/F	3250	3250	3250	3250	3250	3250	3250	3250	3250	3250
樓板 (不包括灰泥) 的厚度 (毫米) Thickness of Floor Slab (excluding plaster) (mm)		125, 150	125, 150	125, 150	125, 150	125, 150	125, 150	125, 150	125, 150	125, 150	150

因住宅物業的較高樓層的結構牆的厚度遞減，較高樓層的內部面積，一般比較低樓層的內部面積稍大。

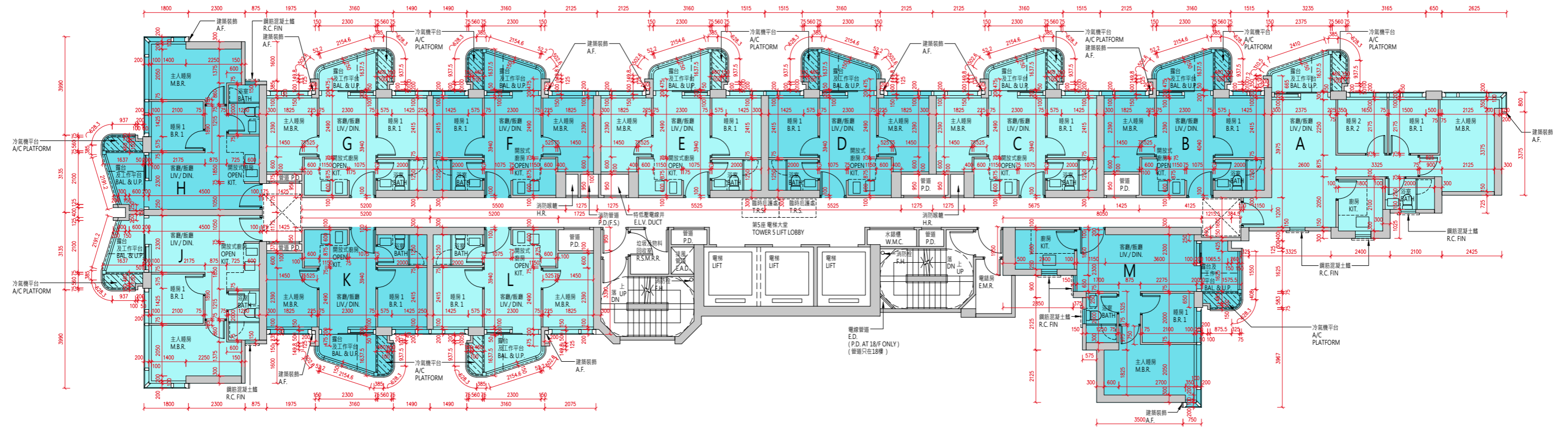
The internal areas of the residential properties on the upper floors will generally be slightly larger than those on the lower floors because of the reducing thickness of the structural walls on the upper floors.

請參閱本售樓說明書第25頁為住宅物業樓面平面圖而設之備註及名詞及簡稱的圖例。

Please refer to page 25 of this sales brochure for the remarks and legends of the terms and abbreviations for the floor plans of residential properties.

# 10 期數的住宅物業的樓面平面圖 FLOOR PLANS OF RESIDENTIAL PROPERTIES IN THE PHASE

18樓-23樓、25樓-30樓樓面平面圖  
18/F-23/F, 25/F-30/F Floor Plan



比例：0米/M 5米/M  
Scale: 5米/M

備註：樓面平面圖所列的數字為以毫米標示之建築結構尺寸，並以四捨五入至整數。

Note: The dimensions in floor plans are all structural dimensions in millimeter and rounded off to the nearest integer.

# 10 期數的住宅物業的樓面平面圖

## FLOOR PLANS OF RESIDENTIAL PROPERTIES IN THE PHASE

每個住宅物業 Each Residential Property	樓層 Floor	第 5 座 Tower 5											
		單位 Flat											
		A	B	C	D	E	F	G	H	J	K	L	M
層與層之間的高度 (毫米) Floor-to-Floor Height (mm)	18 樓 18/F	3250	3250	3250	3250	3250	3250	3250	3250	3250	2950, 3250	2950, 3200, 3250	3250
樓板 (不包括灰泥) 的厚度 (毫米) Thickness of Floor Slab (excluding plaster) (mm)		125, 150	125, 150	125, 150	125, 150	125, 150	125, 150	125, 150	125, 150	125, 150	125, 150	125, 150	150
層與層之間的高度 (毫米) Floor-to-Floor Height (mm)	19 樓 -23 樓、 25 樓 -29 樓 19/F-23/F, 25/F-29/F	3250	3250	3250	3250	3250	3250	3250	3250	3250	3250	3250	3250
樓板 (不包括灰泥) 的厚度 (毫米) Thickness of Floor Slab (excluding plaster) (mm)		125, 150	125, 150	125, 150	125, 150	125, 150	125, 150	125, 150	125, 150	125, 150	125, 150	125, 150	150

每個住宅物業 Each Residential Property	樓層 Floor	第 5 座 Tower 5											
		單位 Flat											
		A	B	C	D	E	F	G	H	J	K	L	M
層與層之間的高度 (毫米) Floor-to-Floor Height (mm)	30 樓 30/F	3250	3250	3250	3250	3250	3250	3250	3025, 3250	3025, 3250	3250	3250	3250
樓板 (不包括灰泥) 的厚度 (毫米) Thickness of Floor Slab (excluding plaster) (mm)		200	200	200	200	200	200	200	200, 350	200, 350	200	200	200

因住宅物業的較高樓層的結構牆的厚度遞減，較高樓層的內部面積，一般比較低樓層的內部面積稍大。

The internal areas of the residential properties on the upper floors will generally be slightly larger than those on the lower floors because of the reducing thickness of the structural walls on the upper floors.

請參閱本售樓說明書第25頁為住宅物業樓面平面圖而設之備註及名詞及簡稱的圖例。

Please refer to page 25 of this sales brochure for the remarks and legends of the terms and abbreviations for the floor plans of residential properties.



# 10 期數的住宅物業的樓面平面圖

## FLOOR PLANS OF RESIDENTIAL PROPERTIES IN THE PHASE

每個住宅物業 Each Residential Property	樓層 Floor	第 5 座 Tower 5			
		單位 Flat			
		A	H	J	M
層與層之間的高度 (毫米) Floor-to-Floor Height (mm)	天台 Roof	不適用 Not Applicable			
樓板 (不包括灰泥) 的厚度 (毫米) Thickness of Floor Slab (excluding plaster) (mm)					

因住宅物業的較高樓層的結構牆的厚度遞減，較高樓層的內部面積，一般比較低樓層的內部面積稍大。

The internal areas of the residential properties on the upper floors will generally be slightly larger than those on the lower floors because of the reducing thickness of the structural walls on the upper floors.

請參閱本售樓說明書第25頁為住宅物業樓面平面圖而設之備註及名詞及簡稱的圖例。

Please refer to page 25 of this sales brochure for the remarks and legends of the terms and abbreviations for the floor plans of residential properties.