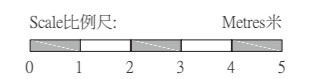
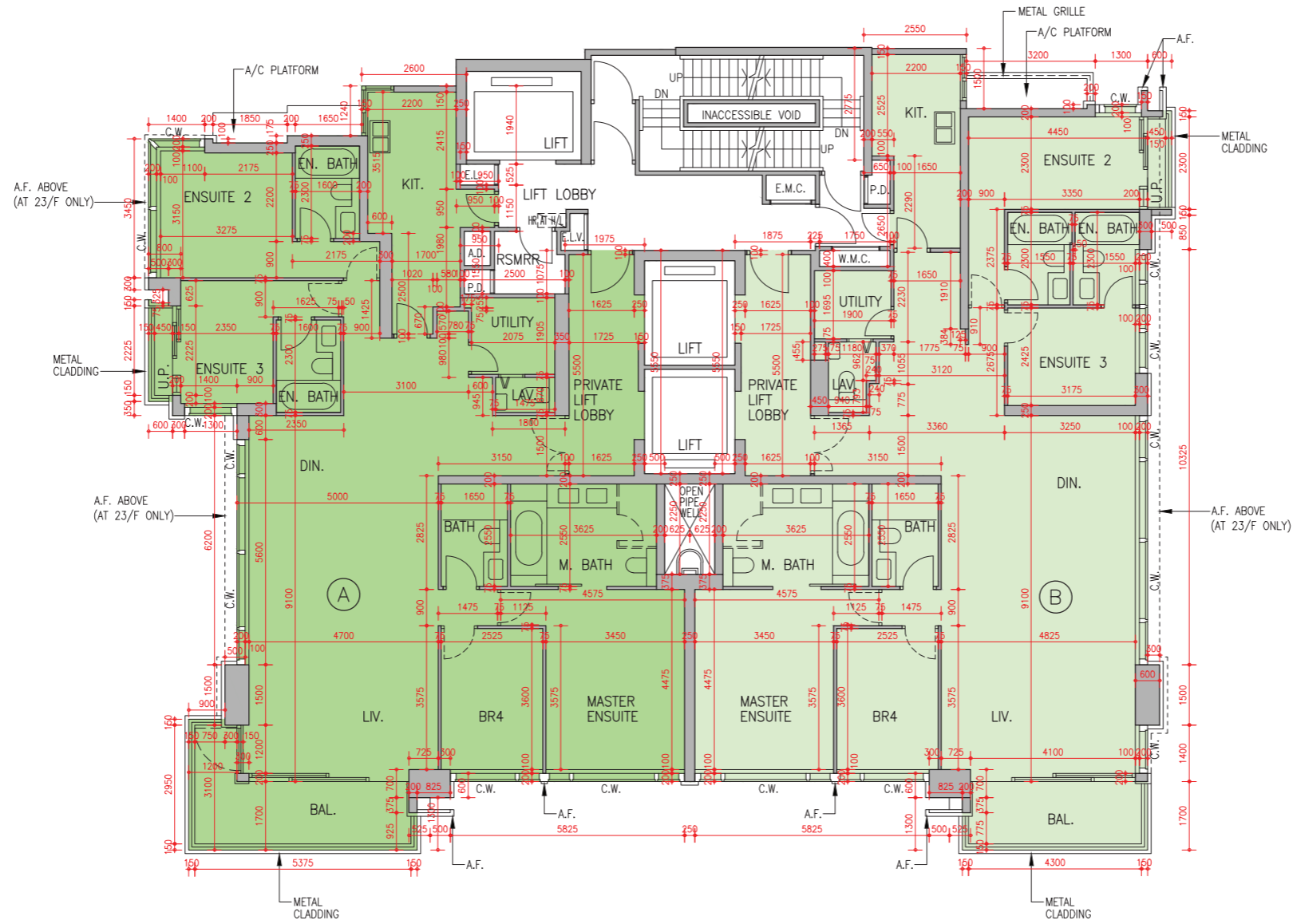


# FLOOR PLANS OF RESIDENTIAL PROPERTIES IN THE PHASE 期數的住宅物業的樓面平面圖

TOWER 1 6/F - 12/F & 15/F - 22/F FLOOR PLAN  
第1座 6樓至12樓及15樓至22樓樓面平面圖



## FLOOR PLANS OF RESIDENTIAL PROPERTIES IN THE PHASE 期數的住宅物業的樓面平面圖

	Tower 座數	Floor 樓層	Flat 單位	
			A	B
The floor-to-floor height of each residential property (mm) 每個住宅物業的層與層之間的高度 (毫米)	Tower 1 第1座	6/F - 12/F & 15/F-21/F 6樓至12樓及15樓至21樓	3450	3450
Thickness of the floor slabs (excluding plaster) of each residential property (mm) 每個住宅物業的樓板 (不包括灰泥)的厚度 (毫米)			150, 175 & 200	150, 175 & 200
The floor-to-floor height of each residential property (mm) 每個住宅物業的層與層之間的高度 (毫米)	Tower 1 第1座	22/F 22樓	3150, 3200, 3250, 3300, 3400, 3450, 3500, 3550, 3650, 3750, 3800, 3850 & 3900	3150, 3200, 3250, 3300, 3450, 3500, 3550, 3650, 3750, 3800 & 3850
Thickness of the floor slabs (excluding plaster) of each residential property (mm) 每個住宅物業的樓板 (不包括灰泥) 的厚度 (毫米)			150, 175 & 200	150, 175 & 200

The internal areas of the residential properties on the upper floors will generally be slightly larger than those on the lower floors because of the reducing thickness of the structural walls on the upper floors.

The floor-to-floor height includes of the thickness of concrete fill on sunken slab on the floor of this floor.

Notes :

1. The dimension in the floor plans are all structural dimensions in millimetre.
2. Please refer to Page 100 of this sales brochure for remarks and legend of the terms and abbreviations shown on the floor plan.

因住宅物業的較高樓層的結構牆的厚度遞減，較高樓層的內部面積，一般比較低樓層的內部面積稍大。

層與層之間的高度包括本層地台跌級樓板上之混凝土填充層厚度。

備註：

1. 樓面平面圖所列之尺寸為以毫米標示之建築結構尺寸。
2. 請參閱本售樓說明書第100頁之備註及圖例以解讀樓面平面圖所顯示之名詞及簡稱。